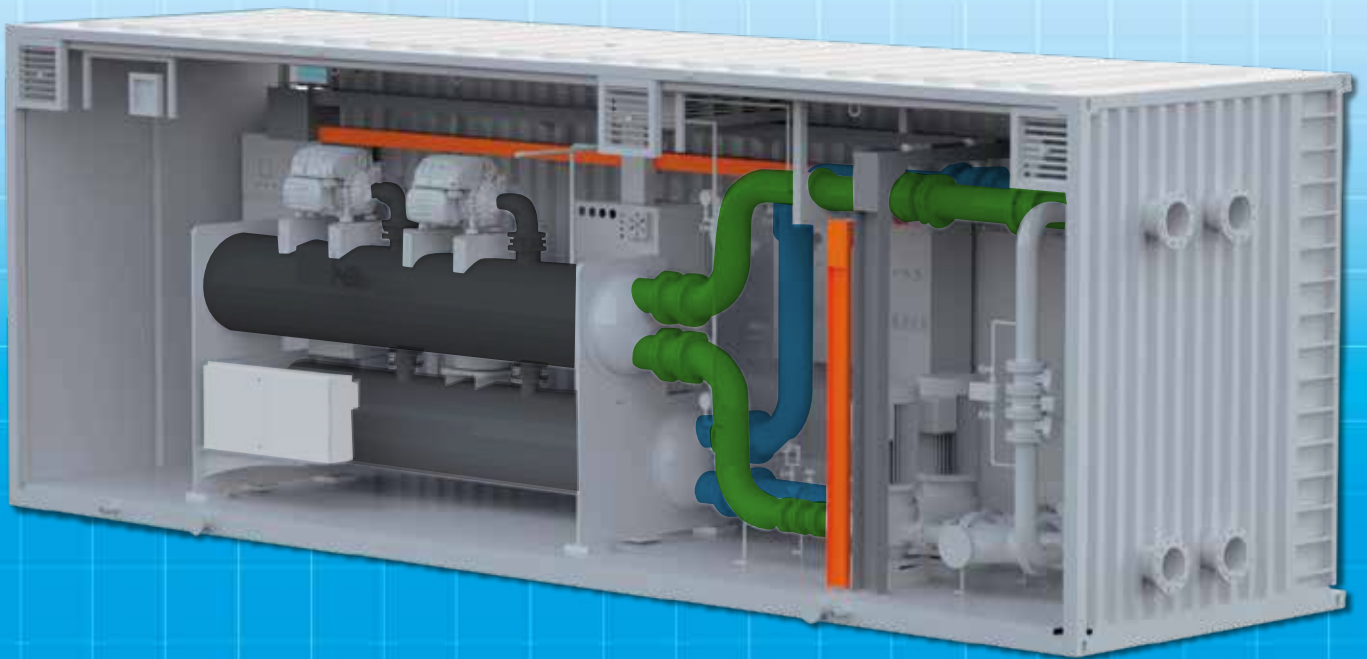




Perfecting the Air

# MODULAR CHILLER PLANT

Delivers high performance with all  
the benefits of pre-fabrication



GB/T 19001  
CGM-42-1998-0253-0001



MANAGEMENT SYSTEM  
CNAS C002-M

ISO9001



GB/T 24001  
CGM-42-1998-0253-0002



MANAGEMENT SYSTEM  
CNAS C002-M

ISO14001



GB/T 28001  
CGM-42-1998-0253-0003



MANAGEMENT SYSTEM  
CNAS C002-M

ISO45001

# Introduction

As the global HVAC leader, Daikin has designed the plug and play Modular Chiller Plant to deliver high performance with all the benefits of pre-fabrication. The Modular Chiller Plant perfectly combined the most advanced technology with oil free magnetic bearing water cooled chillers, pumps with VSD and controls to provide excellent performance.

## Benefits



### PLUG AND PLAY

The individual components are engineered and factory assembled into a single unit for easy installation. Once connected with power, chilled water and condenser water pipes, the system is ready to run.



### COMPACT DESIGN

By pre-assembling all components in the container, it takes up a smaller unit of footprint.



### EXCELLENT EFFICIENCY

The modular chiller plant consists of a magnetic bearing chiller, which uses frictionless oil free compressors. The oil free design eliminates oil contamination in the refrigerant and heat transfer surfaces to provide excellent operating efficiency. Pumps with VSD reduce energy consumption during low load condition.



### RELIABLE & HIGH QUALITY ASSURANCE

The oil free design effectively improves chiller compressor and system reliability, hence there is no need for an oil management system. Performance testing is conducted at the factory to ensure design specifications are met and high-quality product is delivered.



### LOW NOISE & LOW VIBRATION

The modular chiller plant is completed with fully insulated enclosure (50mm thick) and build-in chilled water FCU for cooling.



### BAS INTEGRATION

Designed with high level interfacing, the modular chiller plant allows control and monitoring of chiller pumps, motorized valve and other accessories..



### TIME & COST SAVING

The modular chiller plant is assembled and tested in factory prior to shipping. The unit is compact and is easy to install at site. The on-site installation time can be reduced by 30%.



### HIGH FLEXIBILITY

The modular chiller plant is easy to install and also easy to relocate, making it highly flexible.



### SAFETY

Equipped with smoke, refrigerant and water leak detectors, exhaust fan and alarm monitoring, safety is ensured.



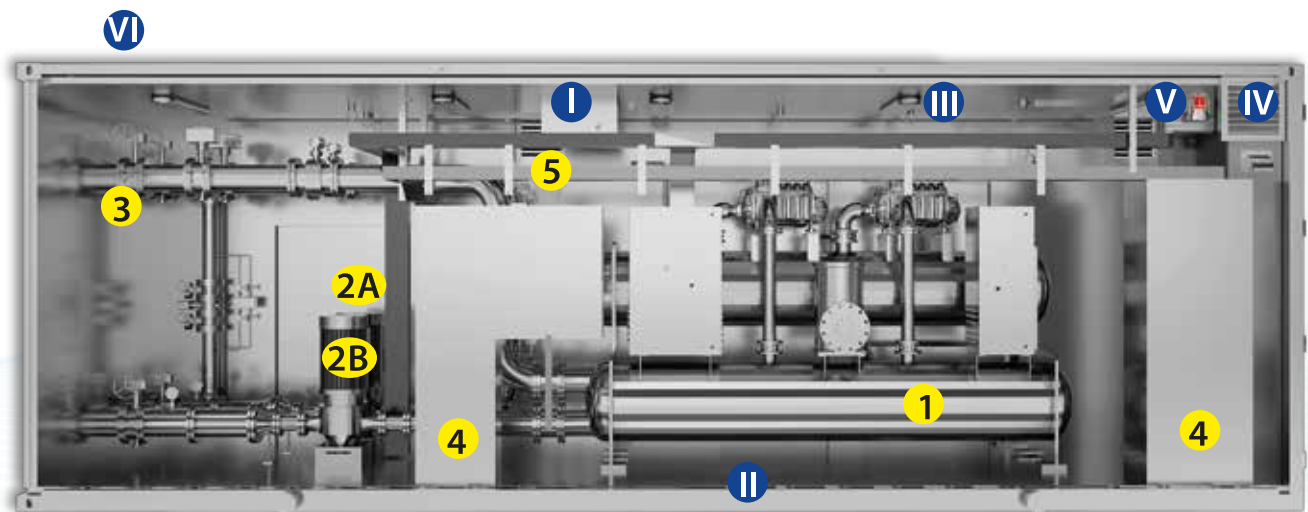
### HIGHLY CUSTOMISABLE

Each modular chiller plant can be customised to suit your building's needs.

# Components

## FUNCTIONAL COMPONENTS:

- 1 Magnetic Bearing Chiller
- 2A Chilled Water Pump With VSD
- 2B Condenser Water Pump With VSD
- 3 Piping for Condenser and Chilled Water
- 4 Switch Board
- 5 Control, Power Cables and LED Lightings



## SAFETY COMPONENTS:

- I Fan Coil Cooling System (for ambient temperature control)
- II Refrigerant and Water Leak Detector
- III Smoke Detector
- IV Exhaust Fan
- V Alarm Light
- VI Sound Proof & Weather Proof Enclosure



# Specifications



Packaged Chiller with Pumps	Cooling Capacity		Dimension (L*W*H)	Shipping Weight	Operation Weight
	ton <sub>R</sub>	kW	mm	kg	kg
	250	879.2	9,500 x 2,600 x 3,300	13,800	15,700
400	1,407	10,500 x 2,800 x 3,500	17,673	19,663	

## DAIKIN AIRCONDITIONING (SINGAPORE) PTE LTD

10 Ang Mo Kio Industrial Park 2, Singapore 569501

☎ 6583 8888 ✉ [sales@daikin.com.sg](mailto:sales@daikin.com.sg)

### Office Operating Hours

Monday to Friday: 8.30am to 6.00pm  
Sat, Sun & public Holiday: Closed

### Showroom Opening Hours

Monday to Friday: 9.00am to 6.00pm  
Sat, Sun & public Holiday: Closed

Find us on



[www.daikin.com.sg](http://www.daikin.com.sg)