



Perfecting the Air

Compatible with:



Providing up to 6 months of lifetime
Size 526 x 523 x 35 (mm)

High performance pre-filter

DAIKIN MERV 8 AIR FILTER

BAF552A160 For Sensing flow / Round flow

Captures 97% of 1.0 - 3.0 μ m particles*
Captures 99% of 3.0 - 10 μ m particles*
when air passes through filter 10 times

* Please refer to Filter Efficiency for details.



Features and Benefits

Pure Air

✓ MERV 8 Rating

This filter is a high performance prefilter that has achieved MERV 8 rating.

✓ PM2.5 Filtration

This filter can capture 97% of 1.0-3.0 μ m particles and 99% of 3.0-10 μ m particles when air passes through the filter 10 times.

✓ Filter Exchange Twice a Year

Recommended to replace the filter twice a year to maintain the filter's high performance.



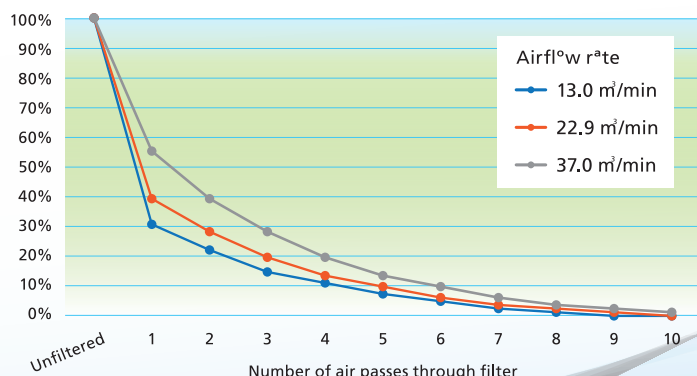
Filter Efficiency

Daikin in-house test results have proven that this filter can meet ASHRAE (American Society of Heating, Refrigerating and Air-Conditioning Engineers) standards MERV 8.

When air conditioning system operates, the air in the room will circulate and pass through the high performance prefilter continuously. As a result, more harmful substances in the air can be captured.

For example, more than 97% of 1.0 - 3.0 μ m sized substances, including PM2.5, can be collected by circulating air through the filter 10 times.

Percentage of 1.0 - 3.0 μ m particles remaining in the indoor air*1



*1. This figure is simulated based on the actual measured data of one-pass performance and assumes that particles do not occur continuously in the room. By repeating the one-pass performance about 2~10 times, it can expect the attenuation as shown in the figure.

Simple Step

✓ Chamberless Filter

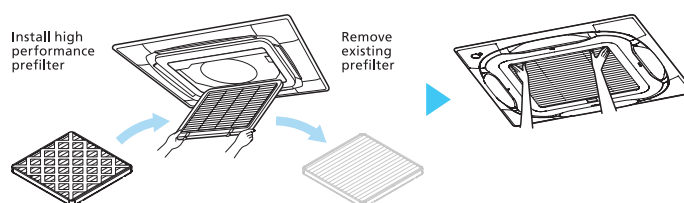
Additional parts and difficult installation works are unnecessary. Just replace the existing prefilter.

✓ Retrofit to Existing Indoor Unit

Attachable to your current round flow cassette for IAQ improvement.

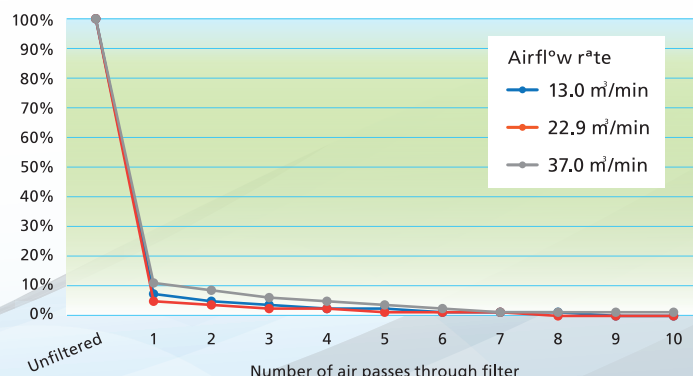
✓ Easy Replacement

The prefilter can be easily replaced by removing the suction grille of the decoration panel*.



* The filter should be fixed to the air conditioner with attached components, please consult your dealer when installing or replacing the filter.

Percentage of 3.0 - 10.0 μ m particles remaining in the indoor air*1





Specifications

DAIKIN AIR FILTER High performance prefilter

BAF552A160



Round flow cassette (including with Sensing Type)

VRV SkyAir



Model Name		BAF552A160		
Brand		DAIKIN		
Performance		MERV 8		
Dimensions	mm	526 x 523 x 35		
Airflow rate	m ³ /min	13.0	22.9	37.0
Initial Pressure Drop* ²	Pa	18.1	35.8	81.4
Weight	g	520		
Lifetime * ³		6 months (1,250 hours)		
Reuse		Non-reusable		

Note 1. It is necessary to set to high ceiling mode on site to prevent a decrease in air volume after installing the filter. The setting number differs according to each model. Please refer to the installation manual.

*2. This result is based on the test of the filter only. The results may be different in the actual operating environment where the filter is installed in the indoor unit.

*3. Filter lifetime may vary depending on the condition of the operating environment. Certain instances such as high traffic areas, pets or smokers in a residence, or other situations may require more frequent changes.



Applicable Models



Indoor Unit		Panel	
Round Flow Cassette with Sensing	FXFSQ-A*	Standard panel	BYCQ125EAF(K)
		Standard panel with sensing	BYCQ125EEF(K)
Round Flow Cassette	FXFQ-A*	Standard panel	BYCQ125EAF(K)
Ceiling Mounted Cassette (Round Flow with Sensing) Type	FXFQ-S	Standard panel	BYCQ125B-W1
Ceiling Mounted Cassette (Round Flow) Type	FXFQ-L	Standard panel	BYCP125K-W1
Round Flow Cassette Type	FXFQ-P	Standard panel	BYCP125K-W1

* Cannot be used for Designer panel (BYCQ125EAPF) and auto grille panel (BYCQ125EASF)



Indoor Unit		Panel	
Ceiling Mounted Cassette Type <Round Flow> (R32)	FCF series* FCA series* FCFC series*	Standard panel	BYCQ125EAF(K)
		Standard panel with sensing	BYCQ125EEF(K)
Ceiling Mounted Cassette Type <Round Flow> (R410A)	FCQ series FCNQ series	Decoration panel	BYCP125K-W1

* Cannot be used for Designer panel (BYCQ125EAPF) and auto grille panel (BYCQ125EBSF)

DAIKIN AIRCONDITIONING (SINGAPORE) PTE LTD

10 Ang Mo Kio Industrial Park 2, Singapore 569501
T: 6311 8686 E: accessories@daikin.com.sg

Office Operating Hours
Monday to Friday: 8:30 am to 6:00 pm
Saturday: 9am to 12pm
Sunday and Public Holiday: Closed



Scan here for
more information