



PCTVSG1815A

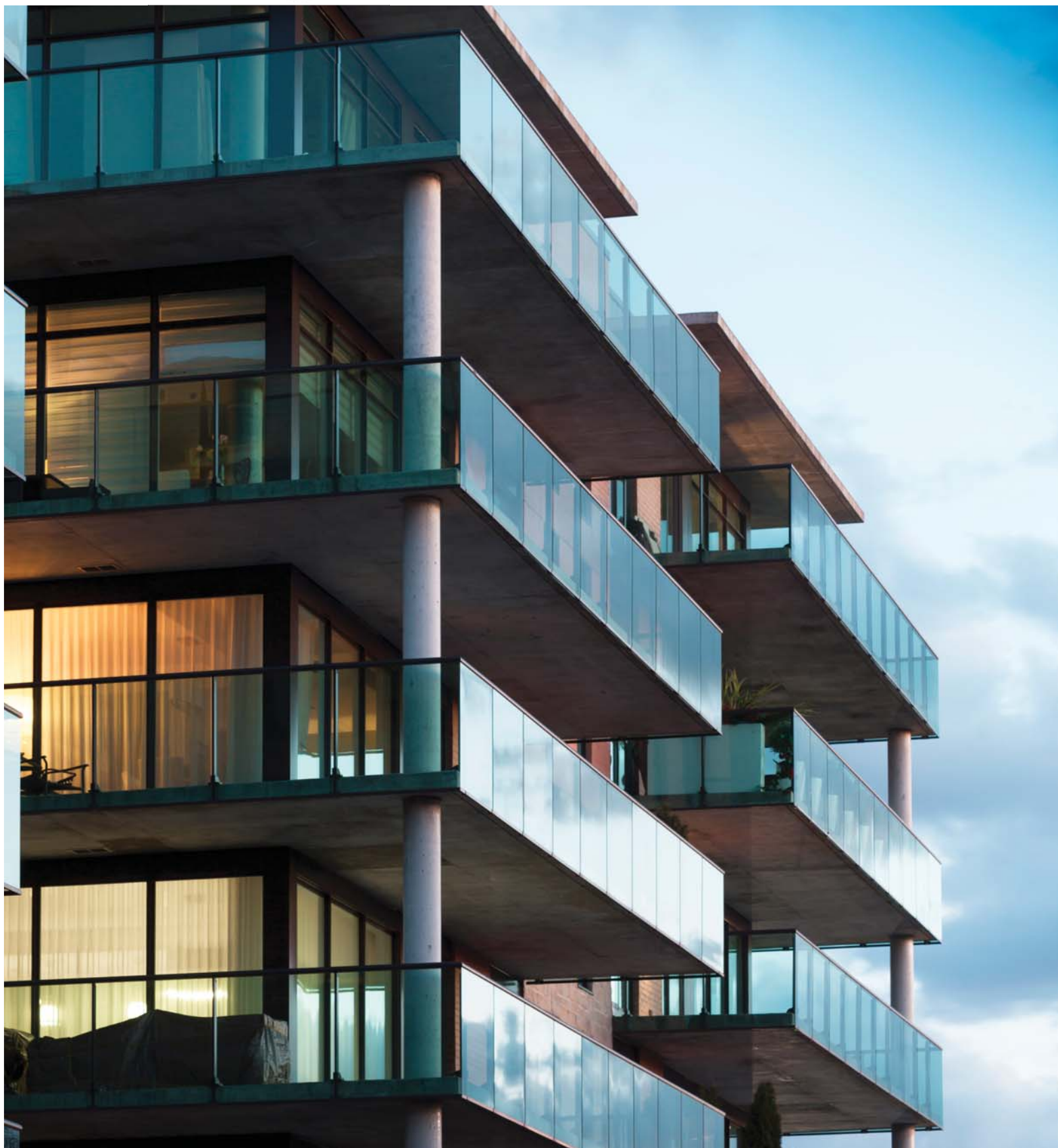
Cooling only 50/60 Hz

New RXMUQ-AVEG



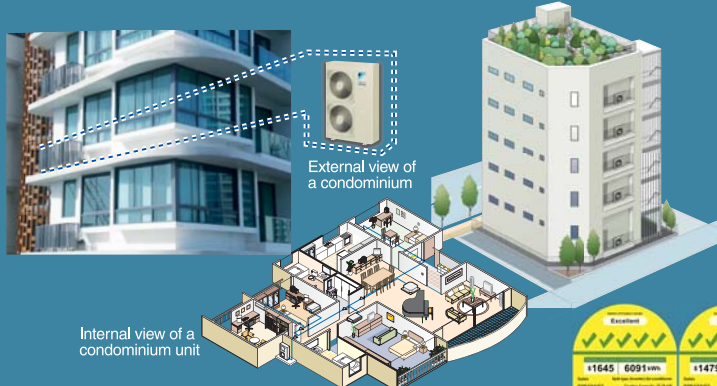
R-410A

*VRV IV S 5 ticks SERIES*



# VRV IV S 5 ticks SERIES

The Ideal Air Conditioning



RXMUQ-AVEG

Cooling Only

**4 HP - 6 HP**  
(11.2 kW) (16.0 kW)

New

MELS 5 ticks product lineup 4, 5, 6HP

5 ticks

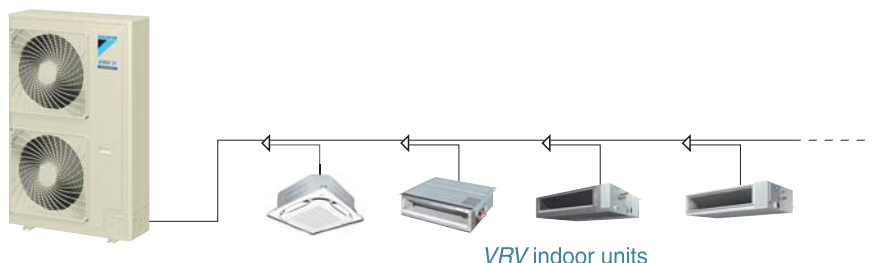


## Connectable up to 9 indoor units

As many as 9 indoor units can be connected to a single outdoor unit, making the **VRV IV S 5 ticks** series a remarkably versatile system.

Note: Total capacity index of connectable indoor units must be 50-130% of the capacity index of the outdoor unit.

Max.  
**9** indoor  
units



Conditions of VRV indoor unit maximum connection capacity

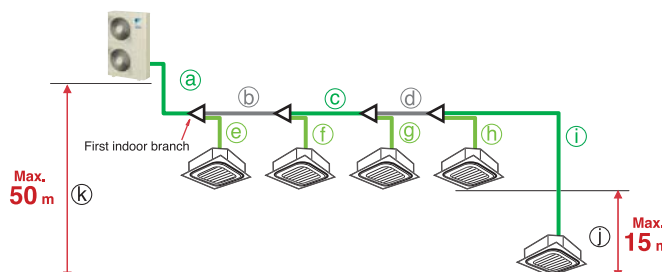
| Applicable VRV indoor units    | <br>FXFSQ, FXDQ, FXSQ, FXMQ models | Including FXFSQ25AVMG or FXFSQ40AVMG at least one unit |
|--------------------------------|------------------------------------|--------------------------------------------------------|
| <b>VRV IV S 5 ticks SERIES</b> | <b>130%</b>                        | <b>100%</b>                                            |

## Makes the long piping design possible

### Piping length restriction (4-6HP)

Actual piping length  
Max. **120 m**

Total piping length  
Max. **300 m**



|                                 |                                                              |                                   |       |
|---------------------------------|--------------------------------------------------------------|-----------------------------------|-------|
| Max. allowable piping length    | Refrigerant piping length                                    | a+b+c+d+i                         | 120 m |
|                                 | Total piping length                                          | a+b+c+d+e+f+g+h+i                 | 300 m |
|                                 | Between the first indoor branch and the farthest indoor unit | b+c+d+i                           | 40 m  |
| Max. allowable level difference | Between the indoor units                                     | j                                 | 15 m  |
|                                 | Between the outdoor units and the indoor units               | If the outdoor unit is above<br>k | 50 m  |
|                                 |                                                              | If the outdoor unit is below<br>k | 40 m  |

# Specifications

| MODEL                              |                                |    | RXMUQ4AVEG                         | RXMUQ5AVEG | RXMUQ6AVEG      |
|------------------------------------|--------------------------------|----|------------------------------------|------------|-----------------|
| Power supply                       |                                |    | 1-phase, 220-230 V/220 V, 50/60 Hz |            |                 |
| Number of connectable indoor units |                                |    | 6                                  | 8          | 9               |
| Cooling capacity                   | Btu/h                          |    | 38,200                             | 47,800     | 54,600          |
|                                    | kW                             |    | 11.2                               | 14.0       | 16.0            |
| Power consumption (Outdoor unit)*1 | kW                             |    | 1.98                               | 2.52       | 2.96            |
| Capacity control                   | %                              |    | 24-100                             |            |                 |
| Casing colour                      |                                |    | Ivory white                        |            |                 |
| Compressor                         | Type                           |    | Hermetically sealed scroll type    |            |                 |
|                                    | Motor output × Number of units | kW | 1.49 × 1                           | 1.85 × 1   | 1.93 × 1        |
| Airflow rate                       | m³/min                         |    | 140                                |            |                 |
| Dimensions (H × W × D)             | mm                             |    | 1,430 × 940 × 320                  |            |                 |
| Machine weight                     | kg                             |    | 127                                |            |                 |
| Sound level                        | dB(A)                          |    | 52                                 | 53         | 55              |
| Operation range                    | °CDB                           |    | -5 to 46                           |            |                 |
| Refrigerant                        | Type                           |    | R-410A                             |            |                 |
|                                    | Charge                         | kg | 4.0                                |            |                 |
| Piping connections                 | Liquid                         | mm | φ9.5 (Flare)                       |            |                 |
|                                    | Gas                            | mm | φ15.9 (Flare)                      |            | φ19.1 (Brazing) |

Notes: Specifications are based on the following conditions;

- Cooling: Indoor temp.: 27°CDB, 19°CWB, Outdoor temp.: 35°CDB, Equivalent piping length: 7.5 m, Level difference: 0 m.
- Sound level: Anechoic chamber conversion value, measured at a point 1 m in front of the unit at a height of 1.5 m.

During actual operation, these values are normally somewhat higher as a result of ambient conditions and oil recovery mode.


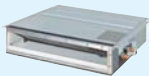
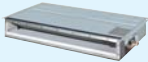


When there is concern for noise the surrounding area such as residences, we recommend investigating the installation location and taking soundproofing measures.

- Refrigerant charge is required.

★1 : Connection condition of indoor units

- RXMUQ4AVEG : FXFSQ25AVMG × 4
- RXMUQ5AVEG : FXFSQ25AVMG × 5
- RXMUQ6AVEG : FXFSQ25AVMG × 6

# Indoor units lineup

| Type                                           | Model Name                         |                                                                                                                 | 20     | 25   | 32      | 40     | 50   | 63     | 80     | 100  | 125  | 140  |
|------------------------------------------------|------------------------------------|-----------------------------------------------------------------------------------------------------------------|--------|------|---------|--------|------|--------|--------|------|------|------|
|                                                |                                    | Capacity Range                                                                                                  | 0.8 HP | 1 HP | 1.25 HP | 1.6 HP | 2 HP | 2.5 HP | 3.2 HP | 4 HP | 5 HP | 6 HP |
|                                                |                                    | Capacity Index                                                                                                  | 20     | 25   | 31.25   | 40     | 50   | 62.5   | 80     | 100  | 125  | 140  |
| Ceiling Mounted Cassette                       | FXFSQ-AVM(G)                       |                              |        | ●    |         | ●      |      | ●      |        | ●    | ●    | ●    |
| Slim Ceiling Mounted Duct<br>(Standard Series) | FXDQ-PDVE<br>(with drain pump)     | <br>(700mm width type)       | ●      | ●    | ●       |        |      |        |        |      |      |      |
|                                                | FXDQ-PDVET<br>(without drain pump) |                                                                                                                 | ●      | ●    | ●       |        |      |        |        |      |      |      |
|                                                | FXDQ-NDVE<br>(with drain pump)     | <br>(900/1,100mm width type) |        |      |         | ●      | ●    | ●      |        |      |      |      |
|                                                | FXDQ-NDVET<br>(without drain pump) |                                                                                                                 |        |      |         | ●      | ●    | ●      |        |      |      |      |
| Middle Static Pressure<br>Ceiling Mounted Duct | FXSQ-PAVE                          |                              | ●      | ●    | ●       | ●      | ●    | ●      | ●      | ●    | ●    | ●    |
| Ceiling Mounted Duct                           | FXMQ-PAVE                          |                              | ●      | ●    | ●       | ●      | ●    | ●      | ●      | ●    | ●    | ●    |

Refer to each indoor unit's specification table in page 3-6.



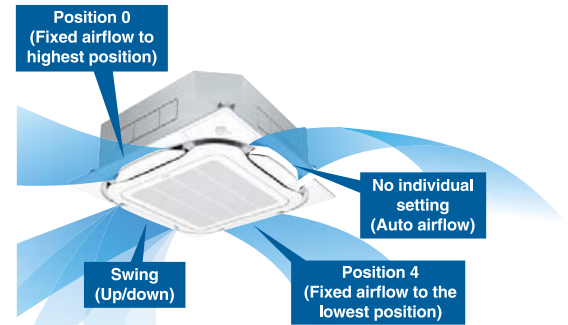
# Ceiling Mounted Cassette Type

FXFSQ-A

## Individual Airflow Direction Control\*

Comfortable air conditioning for all room layouts and conditions

Airflow direction can be individually adjusted for each air discharge outlet to deliver optimal air distribution.



\*Applicable when wired remote controller BRC1E63 is used.

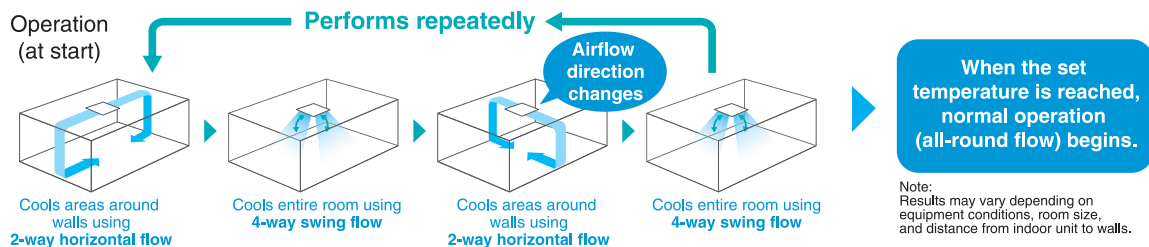
## Circulation Airflow\*

Circulation airflow cools the entire room to deliver comfort that never feels cold.



## Configurations of Circulation Airflow

Cools the entire room to deliver comfort that never feels cold.



Note:  
Results may vary depending on equipment conditions, room size, and distance from indoor unit to walls.

## Specifications

| MODEL                                    |                | FXFSQ25AVMG                            | FXFSQ40AVMG          | FXFSQ63AVM          | FXFSQ100AVM             | FXFSQ125AVM               | FXFSQ140AVM               |
|------------------------------------------|----------------|----------------------------------------|----------------------|---------------------|-------------------------|---------------------------|---------------------------|
| Power supply                             |                | 1-phase, 220-240 V/220-230 V, 50/60 Hz |                      |                     |                         |                           |                           |
| Cooling capacity                         | Btu/h          | 9,600                                  | 15,400               | 24,200              | 38,200                  | 47,800                    | 54,600                    |
|                                          | kW             | 2.8                                    | 4.5                  | 7.1                 | 11.2                    | 14.0                      | 16.0                      |
| Power consumption                        | kW             | 0.056                                  |                      | 0.061               | 0.164                   | 0.170                     | 0.194                     |
| Casing                                   |                | Galvanised steel plate                 |                      |                     |                         |                           |                           |
| Airflow rate (H/HM/M/ML/L)               | m³/min         | 21/20.5/19/14.5/11                     | 21.5/20.5/19/14.5/11 | 23.5/21/20/16/13.5  | 33.5/30.5/27/23.5/21    | 34.5/31.5/28.5/25.5/23    | 35.5/32.5/29.5/26.5/23    |
|                                          | cfm            | 741/724/671/512/388                    | 759/724/671/512/388  | 830/741/706/565/477 | 1,183/1,077/953/830/741 | 1,218/1,112/1,006/900/812 | 1,253/1,147/1,041/935/812 |
| Sound level (H/HM/M/ML/L)                | dB(A)          | 37/35/34.5/29.5/27                     | 37.5/35/34.5/29.5/27 | 38/36/35.5/31.5/28  | 44/41/38/35/33          | 45/42.5/39.5/37/35        | 46/43.5/40.5/38/35        |
| Dimensions (HxWxD)                       | mm             | 256x840x840                            |                      |                     |                         | 298x840x840               |                           |
| Machine weight                           |                | kg                                     | 24                   | 22                  | 25                      |                           | 26                        |
| Piping connections                       | Liquid (Flare) | kW                                     | φ6.4                 | φ9.5                |                         |                           |                           |
|                                          | Gas (Flare)    |                                        | φ12.7                |                     |                         |                           |                           |
|                                          | Drain          |                                        | φ15.9                |                     |                         |                           |                           |
| VP25 (External Dia, 32/Internal Dia, 25) |                |                                        |                      |                     |                         |                           |                           |

Notes: Specifications are based on the following conditions;

- Cooling: Indoor temp.: 27°CDB, 19°CWB, Outdoor temp.: 35°CDB, Equivalent piping length: 7.5 m, Level difference: 0 m.
- Capacity of indoor unit is only for reference. Actual capacity of indoor unit is based on the total capacity index. (See Engineering Data Book for details.)
- Sound level: Anechoic chamber conversion value, measured at a point 1.5 m downward from the unit centre.

During actual operation, these values are normally somewhat higher as a result of ambient conditions.

# Slim Ceiling Mounted Duct Type (Standard Series)

FXDQ-PD / ND

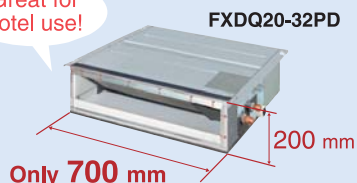
**Slim design, quietness and static pressure switching**



## Suitable to use in drop-ceilings!

- Only 700 mm in width and 23 kg in weight, this model is suitable to install in limited spaces like drop-ceilings in hotels.

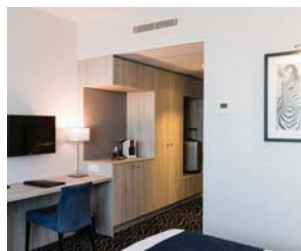
Great for hotel use!



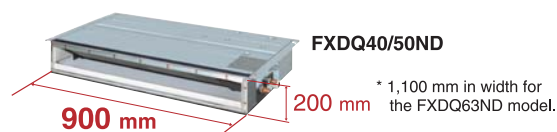
- Control of the airflow rate can be selected from 3-step control and Auto. Auto airflow rate control can be selected with wired remote controller BRC1E63.

- Low operation sound level.

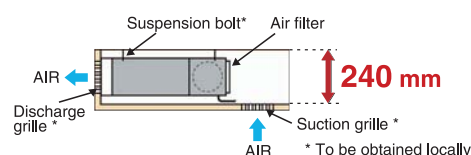
- External static pressure selectable by remote controller switching make this indoor unit a very comfortable and flexible model.



- Only 200 mm in height, this model can be installed in rooms with as little as 240 mm in height for the ceiling space between the drop-ceiling and ceiling slab.



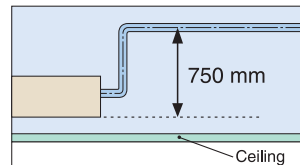
\* 1,100 mm in width for the FXDQ63ND model.



- FXDQ-PD and FXDQ-ND models are available in two types to suit different installation conditions.

FXDQ-PD/NDVE: with a drain pump (750 mm lift) as a standard accessory

FXDQ-PD/NDVET: without a drain pump



## Specifications

| MODEL                               |                | with drain pump    | FXDQ20PDVE                               | FXDQ25PDVE  | FXDQ32PDVE  | FXDQ40NDVE   | FXDQ50NDVE     | FXDQ63NDVE     |
|-------------------------------------|----------------|--------------------|------------------------------------------|-------------|-------------|--------------|----------------|----------------|
|                                     |                | without drain pump | FXDQ20PDVET                              | FXDQ25PDVET | FXDQ32PDVET | FXDQ40NDVET  | FXDQ50NDVET    | FXDQ63NDVET    |
| Power supply                        |                |                    | 1-phase, 220-240 V/220 V, 50/60 Hz       |             |             |              |                |                |
| Cooling capacity                    |                | Btu/h              | 7,500                                    | 9,600       | 12,300      | 15,400       | 19,100         | 24,200         |
|                                     |                | kW                 | 2.2                                      | 2.8         | 3.6         | 4.5          | 5.6            | 7.1            |
| Power consumption (FXDQ-PD/NDVE)*1  |                | kW                 | 0.086                                    |             | 0.089       | 0.160        | 0.165          | 0.181          |
| Power consumption (FXDQ-PD/NDVET)*1 |                | kW                 | 0.067                                    |             | 0.070       | 0.147        | 0.152          | 0.168          |
| Casing                              |                |                    | Galvanised steel plate                   |             |             |              |                |                |
| Airflow rate (HH/H/L)               |                | m³/min             | 8.0/7.2/6.4                              |             |             | 10.5/9.5/8.5 | 12.5/11.0/10.0 | 16.5/14.5/13.0 |
|                                     |                | cfm                | 282/254/226                              |             |             | 371/335/300  | 441/388/353    | 583/512/459    |
| External static pressure            |                | Pa                 | 30-10 *2                                 |             |             | 44-15 *2     |                |                |
| Sound level (HH/H/L)*1*3            |                | dB(A)              | 28/26/23                                 |             | 28/26/24    | 30/28/26     | 33/30/27       | 33/31/29       |
| Dimensions (HxWxD)                  |                | mm                 | 200x700x620                              |             |             | 200x900x620  |                | 200x1,100x620  |
| Machine weight                      |                | kg                 | 23                                       |             |             | 27           | 28             | 31             |
| Piping connections                  | Liquid (Flare) | mm                 | φ6.4                                     |             |             |              |                | φ9.5           |
|                                     | Gas (Flare)    |                    | φ12.7                                    |             |             |              |                | φ15.9          |
|                                     | Drain          |                    | VP20 (External Dia, 26/Internal Dia, 20) |             |             |              |                |                |

Notes: Specifications are based on the following conditions;

- Cooling: Indoor temp.: 27°CDB, 19°CWB, Outdoor temp.: 35°CDB, Equivalent piping length: 7.5 m, Level difference: 0 m.
- Capacity of indoor unit is only for reference. Actual capacity of indoor unit is based on the total capacity index. (See Engineering Data Book for details.)
- Sound level: Anechoic chamber conversion value, measured at a point 1.5 m downward from the unit centre.

During actual operation, these values are normally somewhat higher as a result of ambient conditions.

- \* 1 : Values are based on the following conditions: FXDQ-PD: external static pressure of 10 Pa; FXDQ-ND: external static pressure of 15 Pa.

- \* 2 : External static pressure is changeable to set by the remote controller.

This pressure means "High static pressure - Standard". (Factory setting is 10 Pa for FXDQ-PD models and 15 Pa for FXDQ-ND models.)

- \* 3 : The values of operation sound level represent those for rear-suction operation. Sound level values for bottom-suction operation can be obtained by adding 5 dB(A).

# Middle Static Pressure Ceiling Mounted Duct Type FXSQ-PA

**Middle external static pressure and slim design allow flexible installations**

## Installation flexibility

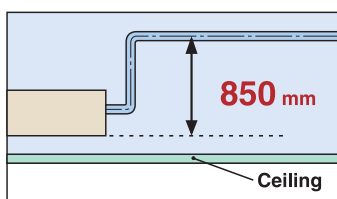
### Slim design

- With a height of only 245 mm, installation is possible even in buildings with narrow ceiling spaces.



### Standard DC drain pump

- DC drain pump is equipped as standard accessory with 850 mm lift.



## Easy installation

### Airflow rate auto adjustment function

- During installation, even if the external static pressure changes due to a change in the duct route, the airflow can be automatically adjusted to within the unit's external static pressure range.
- Airflow rate can be controlled using a remote controller during test operation. It is automatically adjusted to the range between approximately  $\pm 10\%$  of the rated H tap airflow.

## Specifications

| MODEL                    |                | FXSQ20PAVE                         | FXSQ25PAVE                               | FXSQ32PAVE          | FXSQ40PAVE          | FXSQ50PAVE                | FXSQ63PAVE          | FXSQ80PAVE          | FXSQ100PAVE         | FXSQ125PAVE         | FXSQ140PAVE               |
|--------------------------|----------------|------------------------------------|------------------------------------------|---------------------|---------------------|---------------------------|---------------------|---------------------|---------------------|---------------------|---------------------------|
| Power supply             |                | 1-phase, 220-240 V/220 V, 50/60 Hz |                                          |                     |                     |                           |                     |                     |                     |                     |                           |
| Cooling capacity         | Btu/h          | 7,500                              | 9,600                                    | 12,300              | 15,400              | 19,100                    | 24,200              | 30,700              | 38,200              | 47,800              | 54,600                    |
|                          | kW             | 2.2                                | 2.8                                      | 3.6                 | 4.5                 | 5.6                       | 7.1                 | 9.0                 | 11.2                | 14.0                | 16.0                      |
| Power consumption        | kW             | 0.058* <sup>1</sup>                |                                          | 0.066* <sup>1</sup> | 0.101* <sup>1</sup> | 0.075* <sup>1</sup>       | 0.106* <sup>1</sup> | 0.126* <sup>1</sup> | 0.151* <sup>1</sup> | 0.206* <sup>1</sup> | 0.222* <sup>1</sup>       |
| Casing                   |                | Galvanised steel plate             |                                          |                     |                     |                           |                     |                     |                     |                     |                           |
| Airflow rate (H/M/L)     | m³/min         | 9/7.5/6.5                          |                                          | 9.5/8/7             | 15/12.5/10.5        | 17/14.5/11.5              | 21/17.5/14.5        | 23/19.5/16          | 32/27/22.5          | 37/31.5/26          | 39/33.5/28                |
|                          | cfm            | 318/265/230                        |                                          | 335/282/247         | 530/441/371         | 600/512/406               | 741/618/512         | 812/688/565         | 1,130/953/794       | 1,306/1,112/918     | 1,377/1,183/988           |
| External static pressure | Pa             | 30-150 (50)* <sup>2</sup>          |                                          |                     |                     | 50-150 (50)* <sup>2</sup> |                     |                     |                     |                     | 50-140 (50)* <sup>2</sup> |
| Sound level (H/M/L)      | dB(A)          | 33/30/28                           |                                          | 34/32/30            | 36/33/30            | 34/32/29                  | 36/32/29            | 37.5/34/30          | 39/35/32            | 42/38.5/35          | 43/40/36                  |
| Dimensions (HxWxD)       | mm             | 245×550×800                        |                                          |                     | 245×700×800         | 245×1,000×800             |                     |                     | 245×1,400×800       |                     | 245×1,550×800             |
| Machine weight           | kg             | 25                                 |                                          |                     | 27                  | 35                        |                     | 37                  | 46                  | 47                  | 52                        |
| Piping connections       | Liquid (Flare) | kW                                 | φ6.4                                     |                     |                     |                           | φ9.5                |                     |                     |                     |                           |
|                          | Gas (Flare)    |                                    | φ12.7                                    |                     |                     |                           | φ15.9               |                     |                     |                     |                           |
|                          | Drain          |                                    | VP25 (External Dia, 32/Internal Dia, 25) |                     |                     |                           |                     |                     |                     |                     |                           |

Notes: Specifications are based on the following conditions;

- Cooling: Indoor temp.: 27°CDB, 19°CWB, Outdoor temp.: 35°CDB, Equivalent piping length: 7.5 m, Level difference: 0 m.
- Capacity of indoor unit is only for reference. Actual capacity of indoor unit is based on the total capacity index. (See Engineering Data Book for details.)
- Sound level: Anechoic chamber conversion value, measured at a point 1.5 m downward from the unit centre.

During actual operation, these values are normally somewhat higher as a result of ambient conditions.

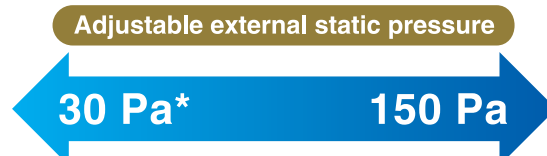
- \*1: Power consumption values are based on conditions of rated external static pressure.
- \*2: External static pressure can be modified using a remote controller that offers thirteen (FXSQ20-40PA), eleven (FXSQ50-125PA) or ten (FXSQ140PA) levels of control. These values indicate the lowest and highest possible static pressures. The rated static pressure is 50 Pa.



## Design flexibility

### Adjustable external static pressure

- Using a DC fan motor, the external static pressure can be controlled within a range of 30 Pa\* to 150 Pa.



Set to low static pressure when ducts are short.

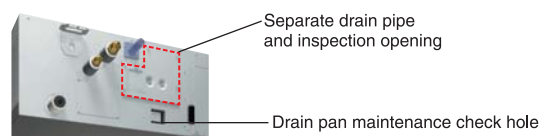
Set to high static pressure for advanced needs such as when using dampers and long ducts.

Comfortable airflow is achieved in accordance with conditions such as duct length.

\*30 Pa–150 Pa for FXSQ20-40PAVE  
50 Pa–150 Pa for FXSQ50-125PAVE  
50 Pa–140 Pa for FXSQ140PAVE

## Easy maintenance

- Inspection and cleaning is facilitated by separating the drain pipe and inspection opening and by the drain pan maintenance check hole.



# Ceiling Mounted Duct Type

FXMQ-PAVE

## Middle and high static pressure allows for flexible duct design

- Using a DC fan motor, the external static pressure can be controlled within a range of 30 Pa\* to 200 Pa\*.

Adjustable external static pressure

30 Pa\*

200 Pa\*

Set to low static pressure when ducts are short.

Set to high static pressure for advanced needs such as when using dampers and long ducts.

Comfortable airflow is achieved in accordance with conditions such as duct length.

\*30 Pa–100 Pa for FXMQ20P-32PA

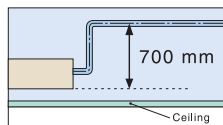
\*30 Pa–160 Pa for FXMQ40PA

\*50 Pa–200 Pa for FXMQ50PA-125PA

\*50 Pa–140 Pa for FXMQ140PA

- All models are only 300 mm in height and the weight of the FXMQ40-140PA has been reduced.

- Drain pump is equipped as standard accessory with 700 mm lift.



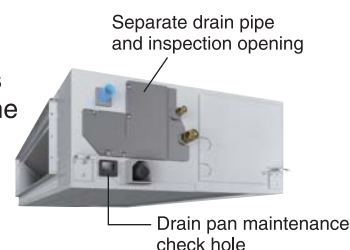
- Control of the airflow rate can be selected from 3-step control and Auto. Auto airflow rate control can be selected with wired remote controller BRC1E63.



- Low operation sound level
- Energy-efficient
  - DC fan motor is used to realise energy-saving operation.

- Easy installation
  - Airflow rate can be controlled using a remote controller during test operation. It is automatically adjusted to the range between approximately  $\pm 10\%$  of the rated HH tap airflow for FXMQ20P–125PA.

- Easy maintenance
  - Inspection and cleaning is facilitated by separating the drain pipe and inspection opening and by the drain pan maintenance check hole.



- An antibacterial treatment that uses silver ions has been applied to the drain pan, preventing the growth of slime, mould and bacteria that cause blockages and odours. (The lifespan of a silver ion cartridge depends on the usage environment, but should be changed once every two to three years.)



## Specifications

| MODEL                    |                | FXMQ20PAVE                         | FXMQ25PAVE                               | FXMQ32PAVE  | FXMQ40PAVE     | FXMQ50PAVE     | FXMQ63PAVE   | FXMQ80PAVE  | FXMQ100PAVE   | FXMQ125PAVE     | FXMQ140PAVE       |
|--------------------------|----------------|------------------------------------|------------------------------------------|-------------|----------------|----------------|--------------|-------------|---------------|-----------------|-------------------|
| Power supply             |                | 1-phase, 220-240 V/220 V, 50/60 Hz |                                          |             |                |                |              |             |               |                 |                   |
| Cooling capacity         | Btu/h          | 7,500                              | 9,600                                    | 12,300      | 15,400         | 19,100         | 24,200       | 30,700      | 38,200        | 47,800          | 54,600            |
|                          | kW             | 2.2                                | 2.8                                      | 3.6         | 4.5            | 5.6            | 7.1          | 9.0         | 11.2          | 14.0            | 16.0              |
| Power consumption        | kW             | 0.056*1                            |                                          | 0.060*1     | 0.151*1        | 0.128*1        | 0.138*1      | 0.185*1     | 0.215*1       | 0.284*1         | 0.405*1           |
| Casing                   |                | Galvanised steel plate             |                                          |             |                |                |              |             |               |                 |                   |
| Airflow rate (HH/M/L)    | m³/min         | 9/7.5/6.5                          |                                          | 9.5/8/7     | 16/13/11       | 18/16.5/15     | 19.5/17.5/16 | 25/22.5/20  | 32/27/23      | 39/33/28        | 46/39/32          |
|                          | cfm            | 318/265/230                        |                                          | 335/282/247 | 565/459/388    | 635/582/530    | 688/618/565  | 883/794/706 | 1,130/953/812 | 1,377/1,165/988 | 1,624/1,377/1,130 |
| External static pressure | Pa             | 30-100 (50)*2                      |                                          |             | 30-160 (100)*2 | 50-200 (100)*2 |              |             |               |                 | 50-140 (100)*2    |
| Sound level (HH/M/L)     | dB(A)          | 33/31/29                           |                                          | 34/32/30    | 39/37/35       | 41/39/37       | 42/40/38     | 43/41/39    |               | 44/42/40        | 46/45/43          |
| Dimensions (H×W×D)       | mm             | 300x550x700                        |                                          |             | 300x700x700    | 300×1,000×700  |              |             | 300×1,400×700 |                 |                   |
| Machine weight           | kg             | 25                                 |                                          |             | 27             | 35             |              |             | 45            |                 | 46                |
| Piping connections       | Liquid (Flare) | kW                                 | φ6.4                                     |             |                |                | φ9.5         |             |               |                 |                   |
|                          | Gas (Flare)    |                                    | φ12.7                                    |             |                |                | φ15.9        |             |               |                 |                   |
|                          | Drain          |                                    | VP25 (External Dia, 32/Internal Dia, 25) |             |                |                |              |             |               |                 |                   |

Notes: Specifications are based on the following conditions;

- Cooling: Indoor temp.: 27°CDB, 19°CWB, Outdoor temp.: 35°CDB, Equivalent piping length: 7.5 m, Level difference: 0 m.
- Capacity of indoor unit is only for reference. Actual capacity of indoor unit is based on the total capacity index. (See Engineering Data Book for details.)
- Sound level: Anechoic chamber conversion value, measured at a point 1.5 m downward from the unit centre.

During actual operation, these values are normally somewhat higher as a result of ambient conditions.

\*1: Power consumption values are based on conditions of rated external static pressure.

\*2: External static pressure can be modified using a remote controller that offers seven (FXMQ20-32PA), thirteen (FXMQ40PA), fourteen (FXMQ50-125PA) or ten (FXMQ140PA) levels of control. These values indicate the lowest and highest possible static pressures. The rated static pressure is 50 Pa for FXMQ20-32PA and 100 Pa for FXMQ40-140PA.



## Decoration Panel Lineup Option



Standard panel with sensing  
BYCQ125EEF (Fresh White)



Standard panel  
BYCQ125EAF (Fresh White)



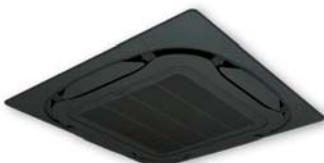
Designer panel  
BYCQ125EAPF (Fresh White)



Auto grille panel  
BYCQ125EASF (Fresh White)



Standard panel with sensing  
BYCQ125EEK (Black)



Standard panel  
BYCQ125EAK (Black)

## Option List for Ceiling Mounted Cassette Type

| No.                              | Item                                                                |                             |                                       | Type                 | Ceiling Mounted Cassette Type                                     |             |
|----------------------------------|---------------------------------------------------------------------|-----------------------------|---------------------------------------|----------------------|-------------------------------------------------------------------|-------------|
|                                  |                                                                     |                             |                                       |                      | FXFSQ25AVMG                                                       | FXFSQ100AVM |
|                                  |                                                                     |                             |                                       |                      | FXFSQ40AVMG                                                       | FXFSQ125AVM |
|                                  |                                                                     |                             |                                       |                      | FXFSQ63AVM                                                        | FXFSQ140AVM |
| 1                                | Decoration panel                                                    | Standard panel with sensing | Fresh white                           |                      | BYCQ125EEF                                                        |             |
|                                  |                                                                     |                             | Black                                 |                      | BYCQ125EEK                                                        |             |
|                                  |                                                                     | Standard panel              | Fresh white                           |                      | BYCQ125EAF *                                                      |             |
|                                  |                                                                     |                             | Black                                 |                      | BYCQ125EAK *                                                      |             |
|                                  |                                                                     | Designer panel <sup>1</sup> | Fresh white                           |                      | BYCQ125EAPF *                                                     |             |
| Auto grille panel <sup>2,3</sup> | Fresh white                                                         |                             | BYCQ125EASF *                         |                      |                                                                   |             |
| 2                                | Sealing material of air discharge outlet <sup>4</sup>               |                             | 1 Outlet                              |                      | KDBH551C160                                                       |             |
|                                  |                                                                     |                             | 2 Outlet                              |                      | KDBH552C160                                                       |             |
| 3                                | Panel spacer                                                        |                             |                                       | KDBP55H160FA         |                                                                   |             |
| 4                                | Fresh air intake kit                                                |                             | Chamber type <sup>5,6</sup>           | Without T-duct joint | KDDP55B160 (Components: KDDP55C160-1, KDDP55B160-2) <sup>8</sup>  |             |
|                                  |                                                                     |                             |                                       | With T-duct joint    | KDDP55B160K (Components: KDDP55C160-1, KDDP55B160K2) <sup>8</sup> |             |
|                                  |                                                                     |                             | Direct installation type <sup>7</sup> |                      | KDDP55X160A                                                       |             |
| 5                                | High-efficiency filter unit <sup>9</sup> (Including filter chamber) |                             | (Colorimetric method 65%)             |                      | KAFF556C80                                                        |             |
|                                  |                                                                     |                             | (Colorimetric method 90%)             |                      | KAFF557C80                                                        |             |
| 6                                | Replacement high-efficiency filter <sup>9,10</sup>                  |                             | (Colorimetric method 65%)             |                      | KAFF552B80                                                        |             |
|                                  |                                                                     |                             | (Colorimetric method 90%)             |                      | KAFF553B80                                                        |             |
| 7                                | Filter chamber                                                      |                             |                                       | KDDFP55C160          |                                                                   |             |
| 8                                | Replacement long-life filter                                        |                             |                                       | KAFF551K160          |                                                                   |             |
| 9                                | Replacement long-life filter (Auto grille panel)                    |                             |                                       | KAFF551H160          |                                                                   |             |
| 10                               | Ultra long-life filter unit (Including filter chamber) <sup>9</sup> |                             |                                       | KAFF55C160           |                                                                   |             |
| 11                               | Replacement ultra long-life filter <sup>9,10</sup>                  |                             |                                       | KAFF55C160H          |                                                                   |             |
| 12                               | Branch duct chamber                                                 |                             |                                       | KDJP55C80            |                                                                   |             |
| 13                               | Insulation kit for high humidity <sup>9,11</sup>                    |                             |                                       | KDTP55K80            |                                                                   |             |
| 14                               | Remote controller                                                   |                             | Wireless type                         | Cooling only         | BRC7M635F (Fresh White) / BRC7M635K (Black)                       |             |
|                                  |                                                                     |                             |                                       | Heat pump            | BRC7M634F (Fresh White) / BRC7M634K (Black)                       |             |
|                                  |                                                                     |                             | Wired type                            | BRC1E63              |                                                                   |             |
| 15                               | Adaptor for wiring <sup>12</sup>                                    |                             |                                       | KRP1C11A             |                                                                   |             |
| 16                               | Wiring adaptor for electrical appendices <sup>12</sup>              |                             |                                       | KRP4AA53             |                                                                   |             |
| 17                               | Installation box for adaptor PCB                                    |                             |                                       | KRP1H98A             |                                                                   |             |
| 18                               | Remote sensor (for indoor temperature)                              |                             |                                       | KRCS01-5B            |                                                                   |             |
| 19                               | External control adaptor for outdoor unit                           |                             |                                       | DTA104A62            |                                                                   |             |
| 20                               | Adaptor for multi tenant                                            |                             |                                       | DTA104A61            |                                                                   |             |

Notes: 1. When installing designer panel, body height (ceiling required dimension) is 42 mm higher than standard panel. Designer panel cannot operate 2 and 3 way flow.  
2. A dedicated wireless remote controller (BRC16A2) for the auto grille panel is included for lowering and raising the suction grille.  
3. When installing auto grille panel, body height (ceiling required dimension) is 55 mm higher than standard panel.  
4. Circulation airflow is not available with this option.  
5. When installing a fresh air intake kit (chamber type), two air outlet corners are closed.  
6. It is recommended that the volume of outdoor air introduced through the kit is limited to 10% of the maximum airflow rate of the indoor unit. Introducing higher quantities will increase the operating sound and may also influence temperature sensing.

7. The volume of fresh air for direct installation type is approximately 1% of the indoor unit airflow. The chamber type is recommended when more fresh air is necessary.  
8. Please order using the names of both components instead of set name.  
9. This option cannot be installed to designer panel and auto grille panel.  
10. Filter chamber is required.  
11. Please use in case temperature/humidity inside ceiling may get over 30°C, 80% RH.  
12. Installation box for adaptor PCB(KRP1H98A) is necessary.  
\*These panels do not contain the sensing function.



**DAIKIN INDUSTRIES(THAILAND) LTD.**

700/11 Moo 1 Amata Nakorn Industrial Estate  
Bangna-trad Rd., Km.57, Tambol Klongtamru,  
Amphur Muang, Chonburi 20000, Thailand  
Tel. +66-38-469-700 Fax. +66-38-469-798

[www.daikinthai.com](http://www.daikinthai.com)

